

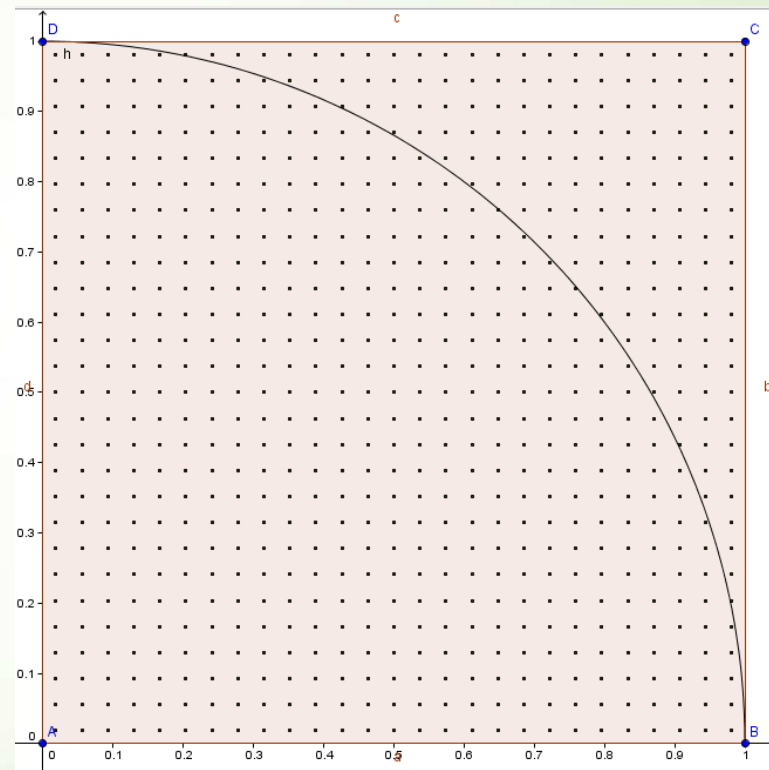
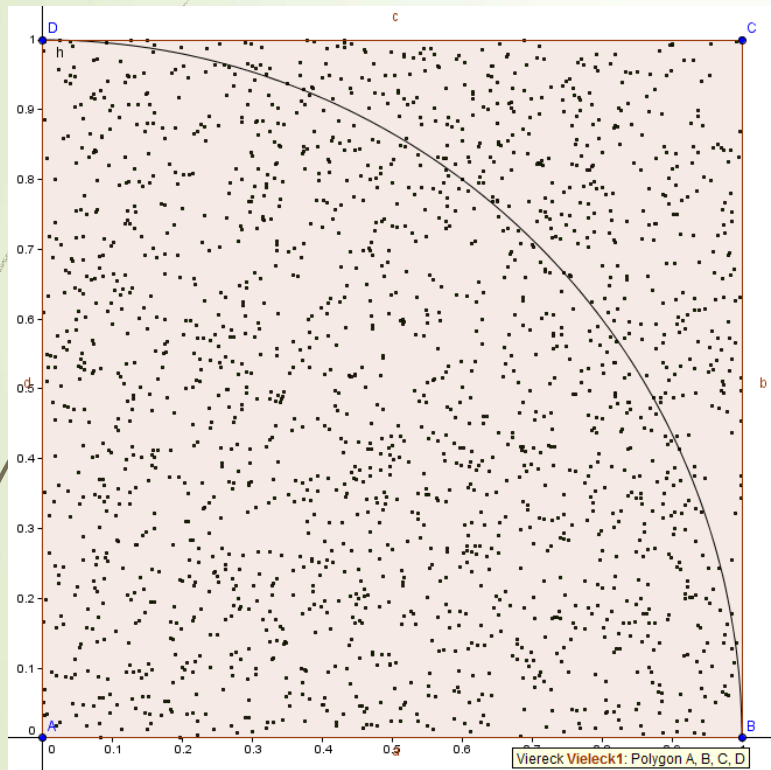


Quasi-Monte-Carlo- Methoden

von Astrid Reisinger, Franziska Fühlberger, Gabriel Pichlbauer, Helena Brunnbauer, Iris Weißenbrunner, Markus Miethlinger, Nina Eder, Oliver Sellner, Simon Hackl, Tobias Biege und Ursula Angleitner

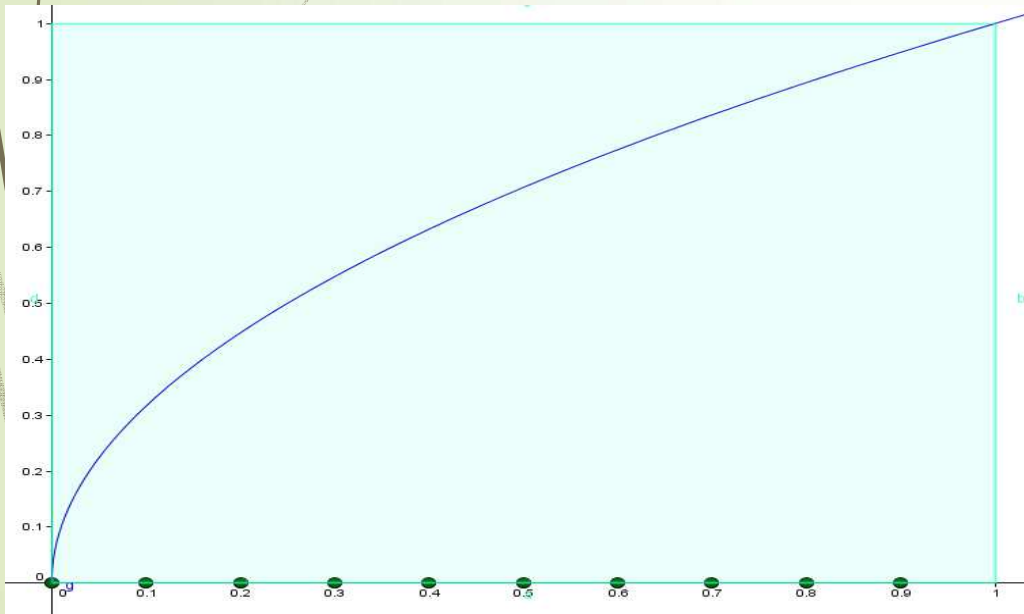
Kursleiter: Ralph

Monte-Carlo-Simulation & Quasi-Monte-Carlo-Methoden

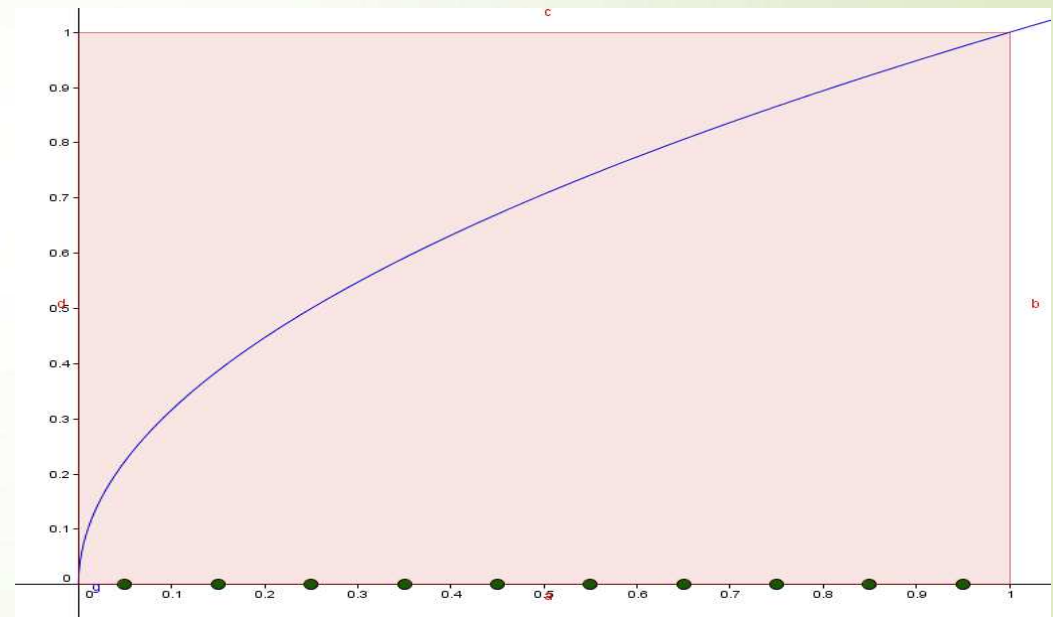


1-Dimensionale Gitter

Gleichmäßiges Gitter

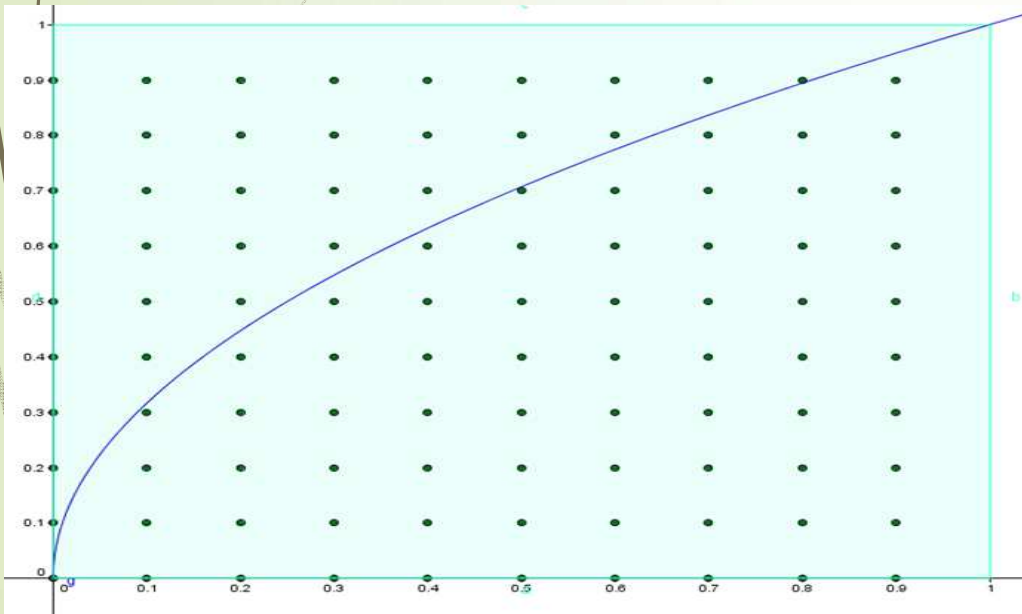


Zentriertes Gitter

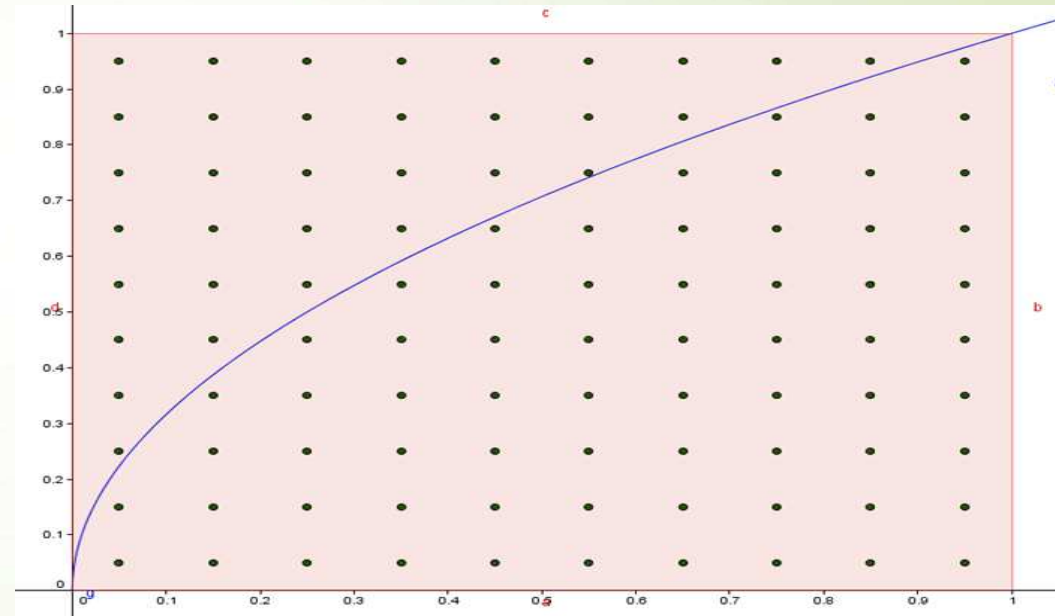


2-Dimensionale Gitter

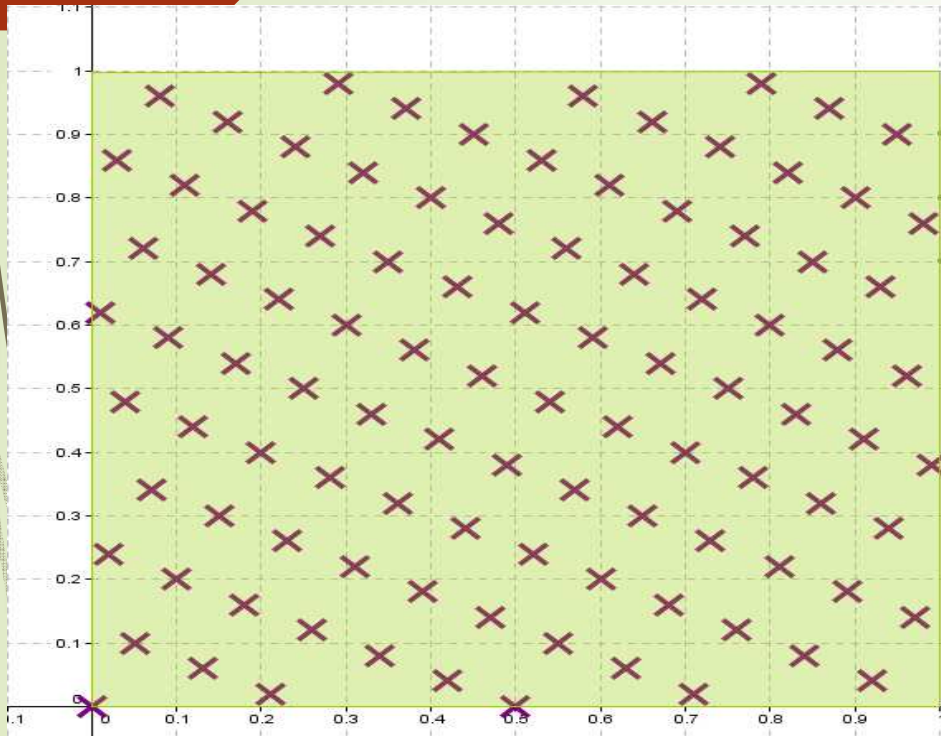
Gleichmäßiges Gitter



Zentriertes Gitter

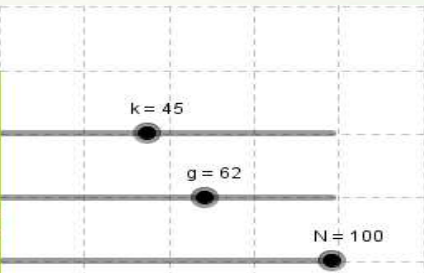


Andere Methoden

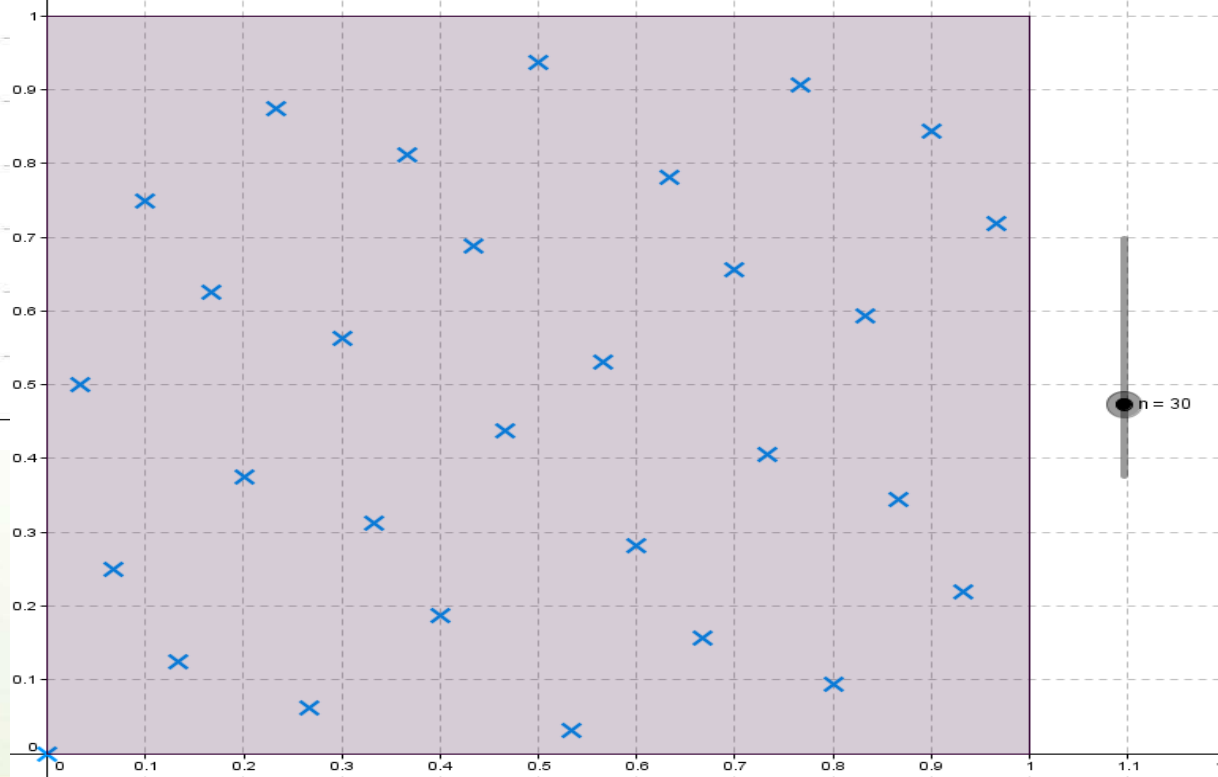


Hammersley & Gitterpunktnetz.ggb

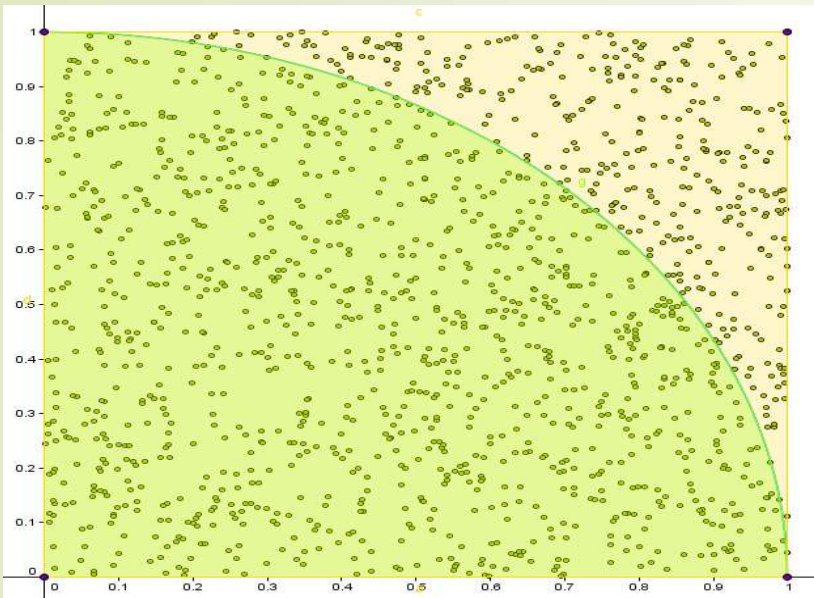
Hammersley =>



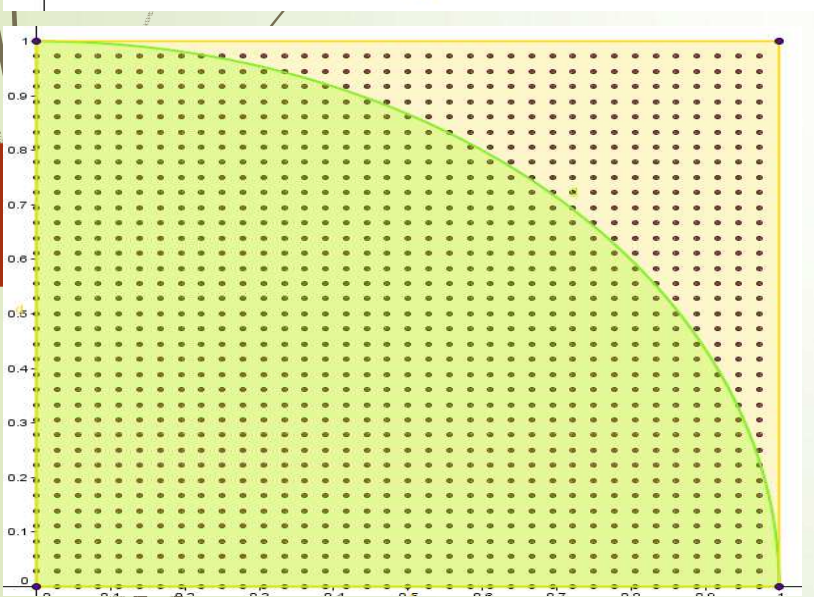
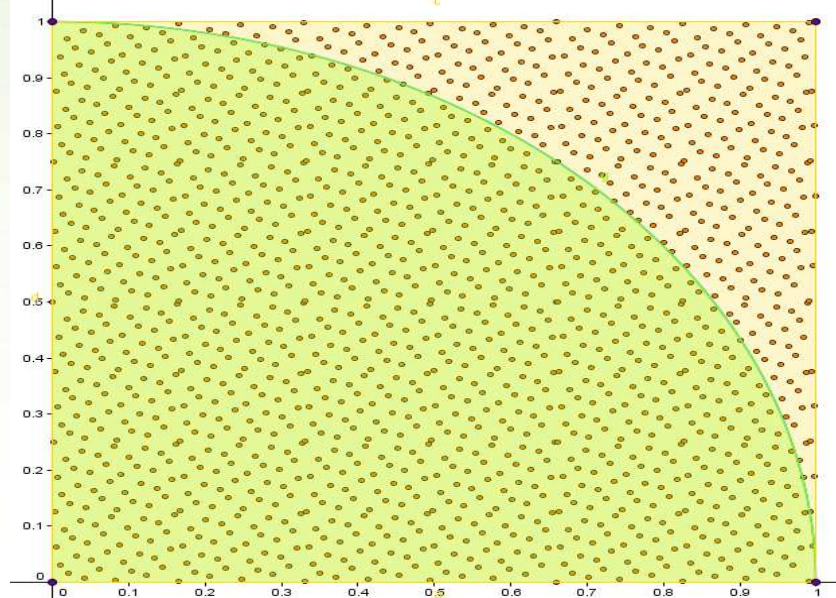
<= Gitterpunktnetz



$\pi=3.0792$



$\pi=3.142$



$\pi=3.1796$

$\pi = 3.1415$
92653589793
238462643383
279502884197169
39937510582097494
4592307816406286208998

Seetiefenbestimmung

